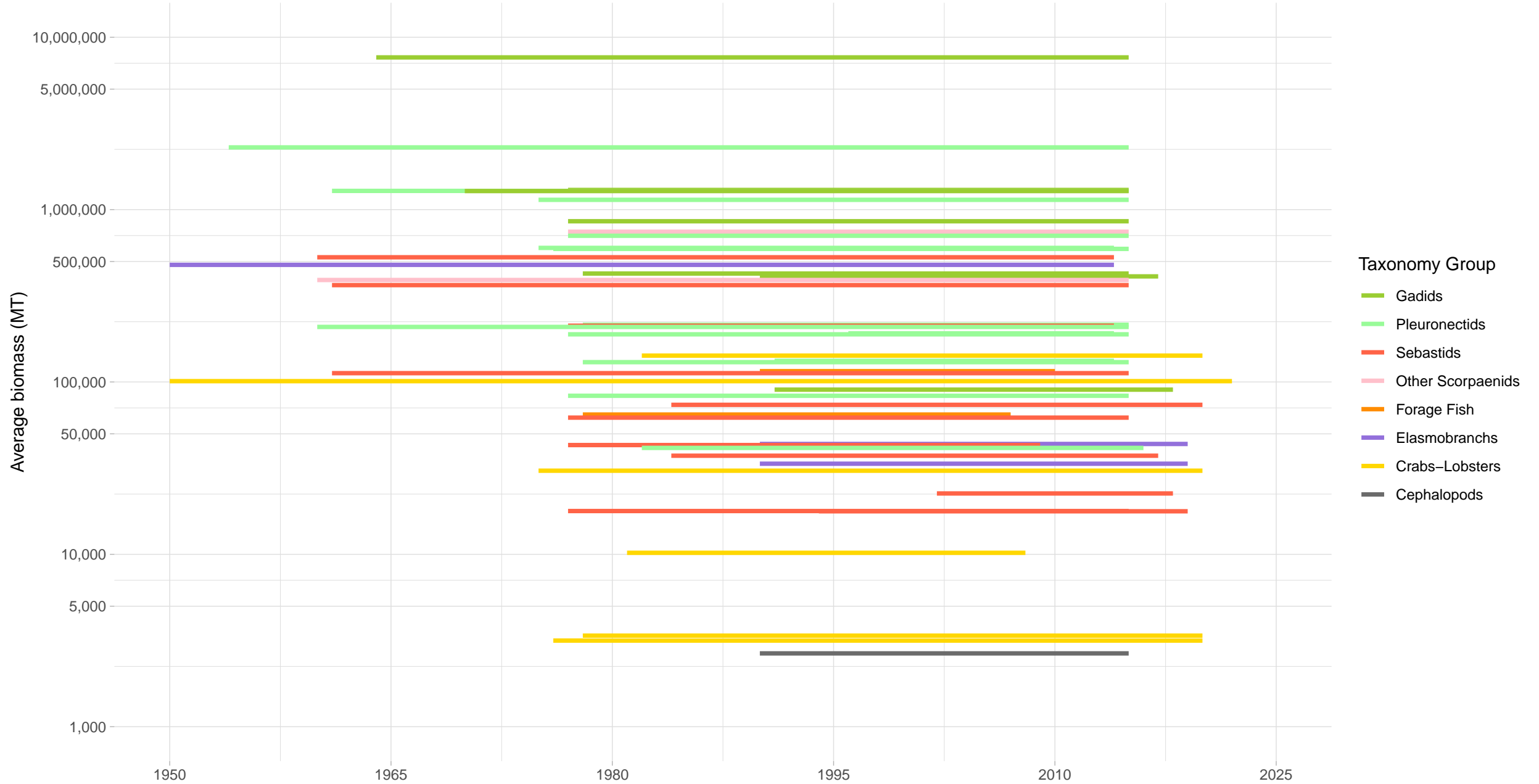
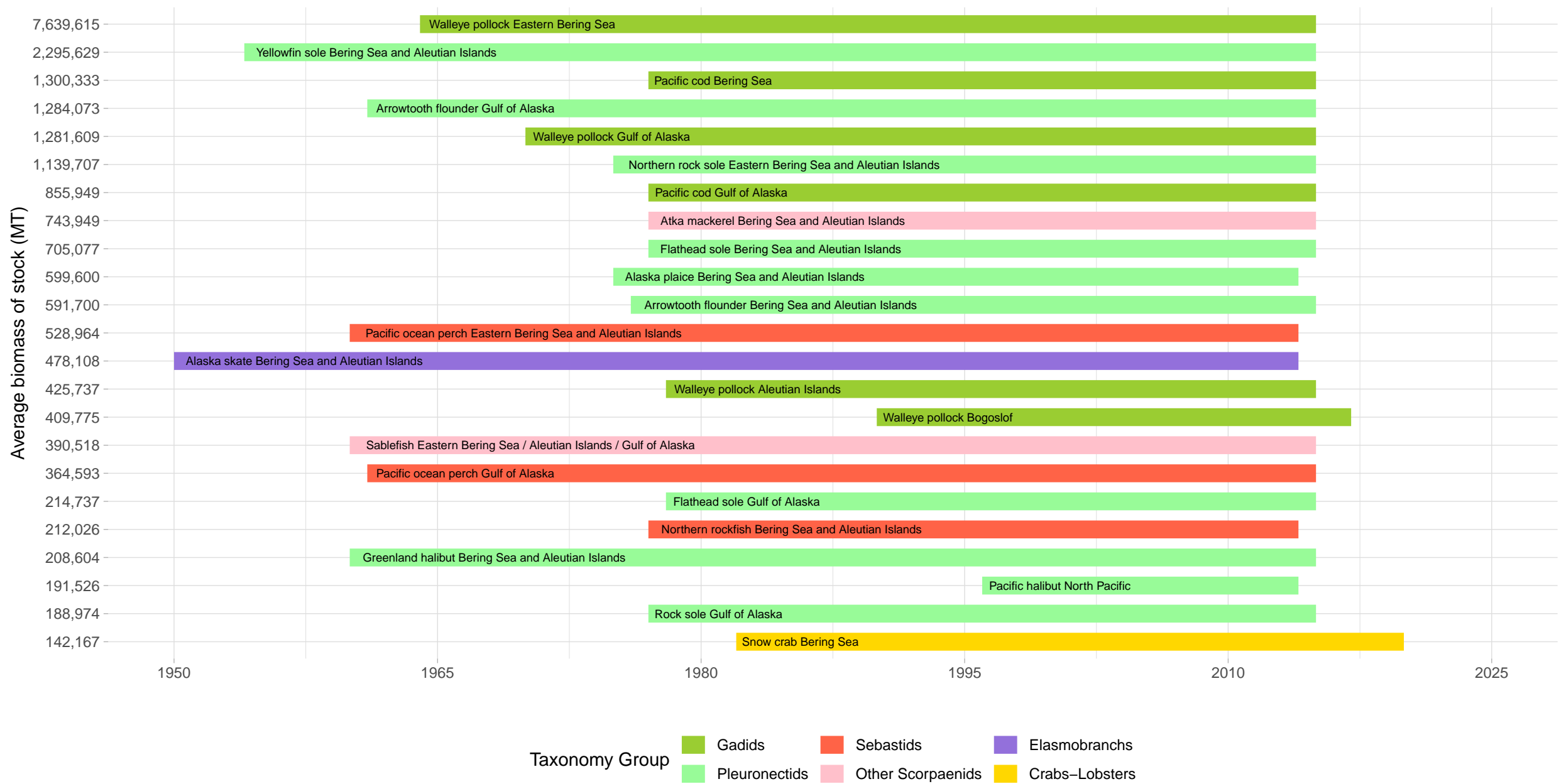


# Biomass Coverage in US Alaska Region



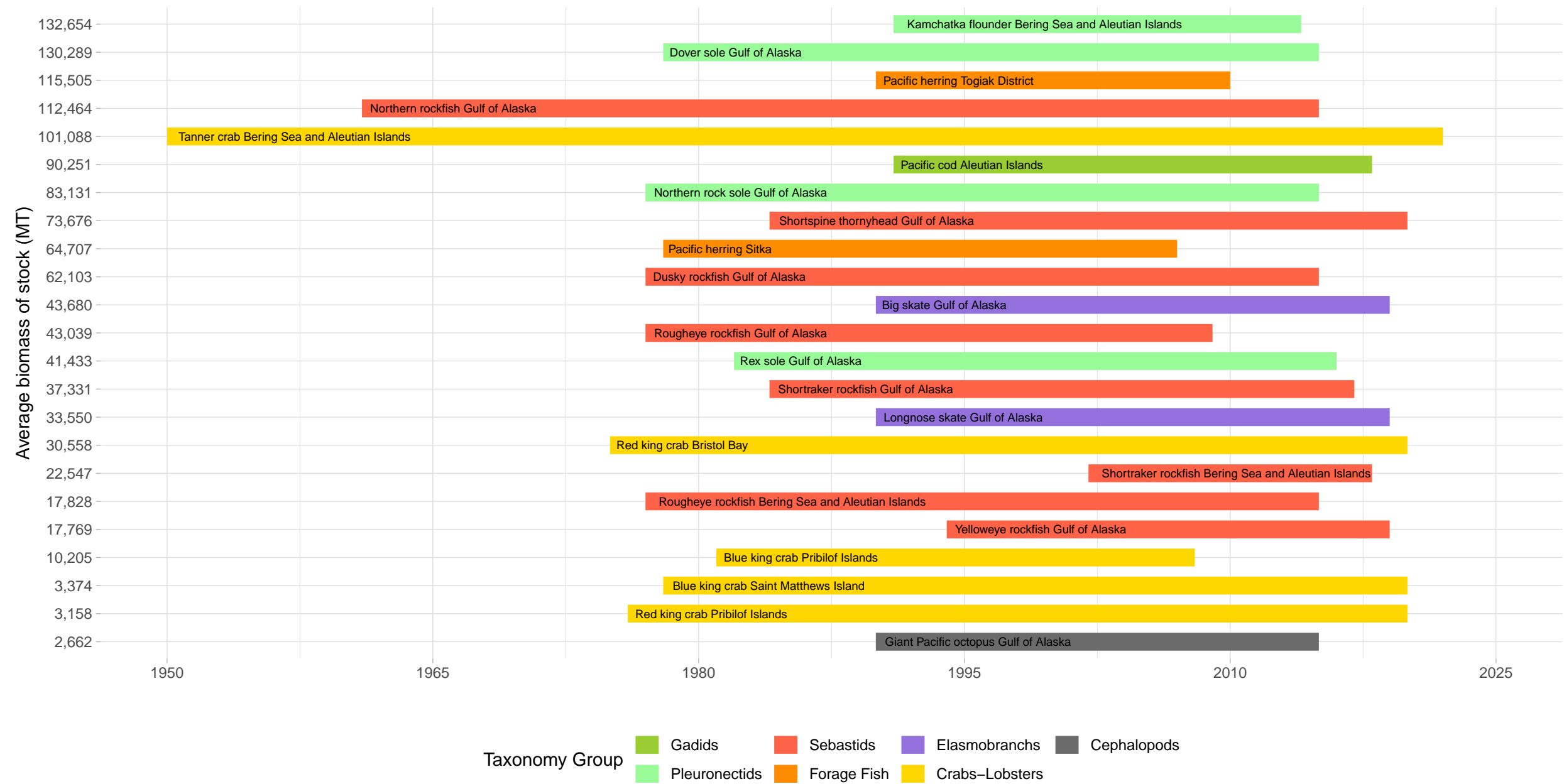
# Biomass Coverage Over Time in US Alaska Region

## Stocks with highest average biomass



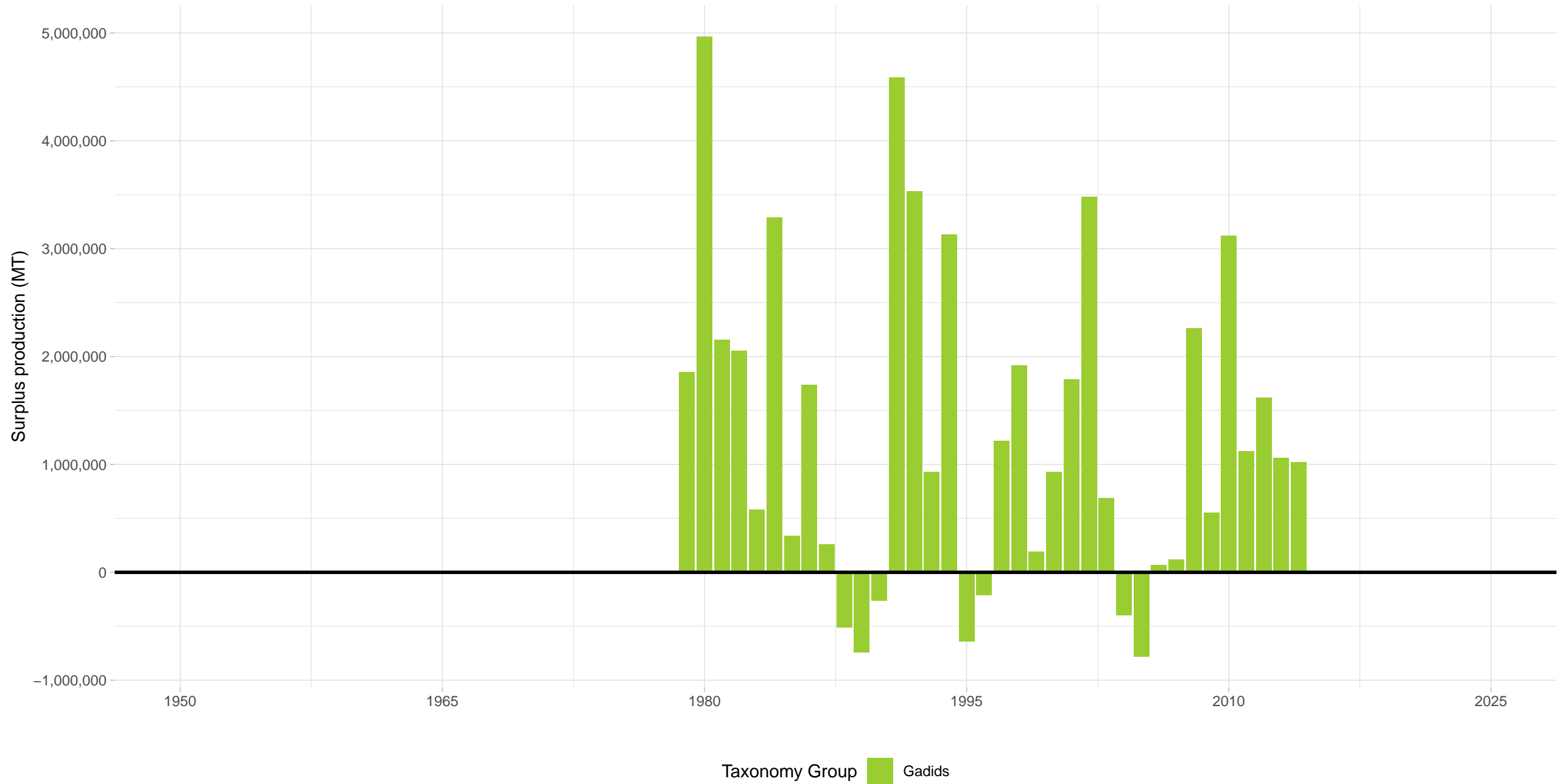
Biomass Coverage Over Time in US Alaska Region

Stocks with lowest average biomass



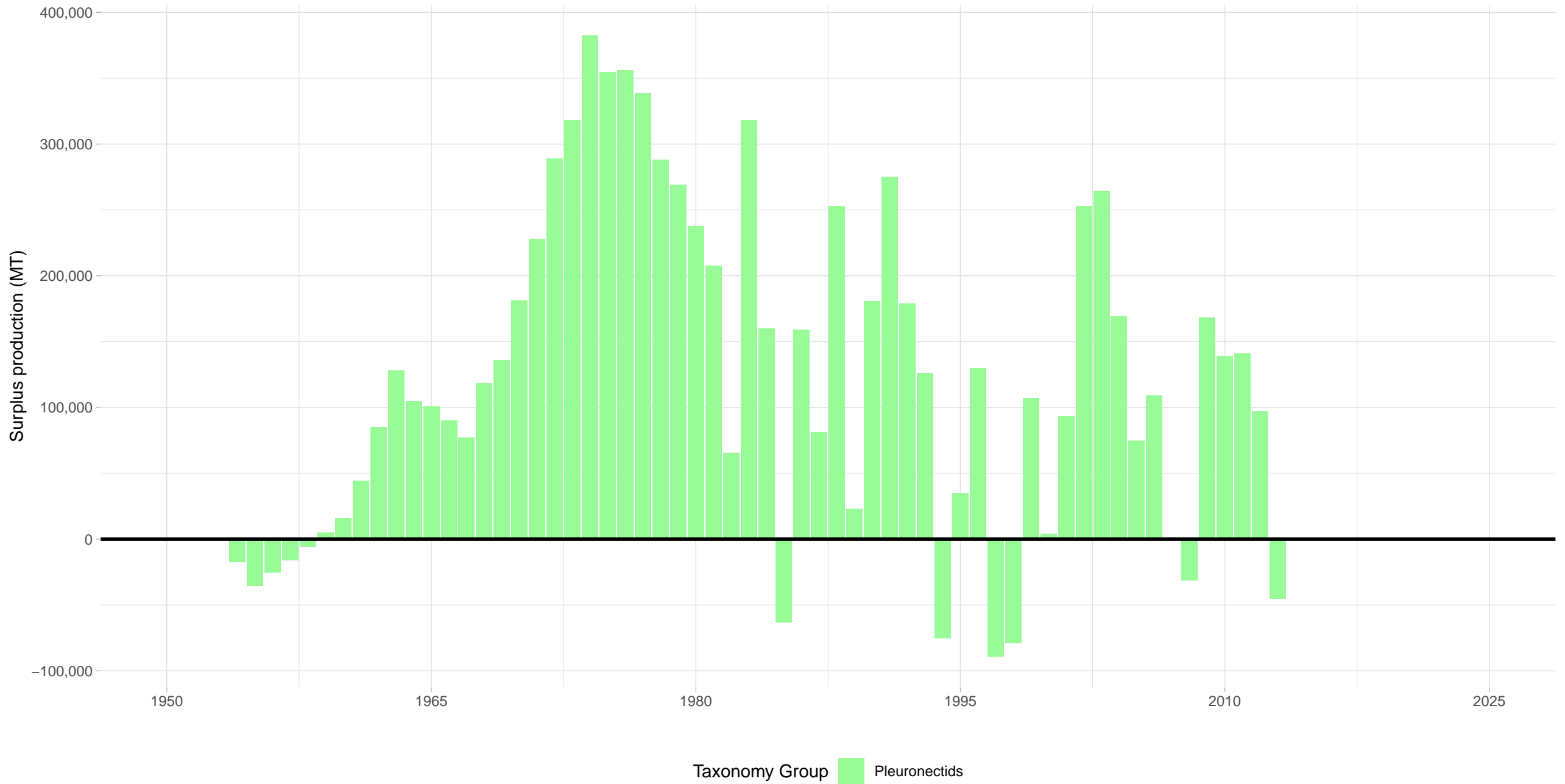
# Walleye pollock Eastern Bering Sea – US Alaska Region

Stock represents 55% of average absolute surplus production

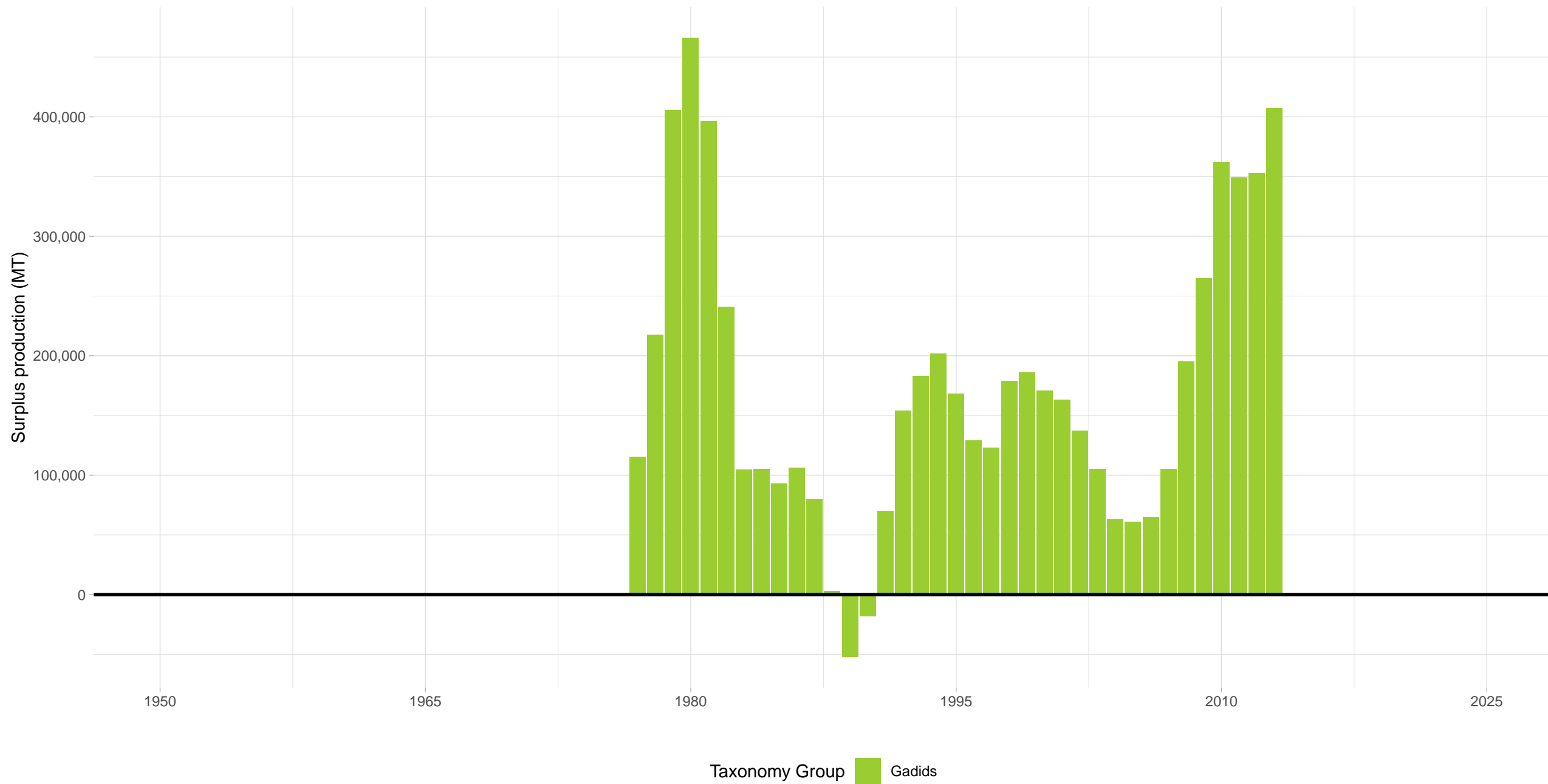


# Yellowfin sole Bering Sea and Aleutian Islands – US Alaska Region

Stock represents 5% of average absolute surplus production

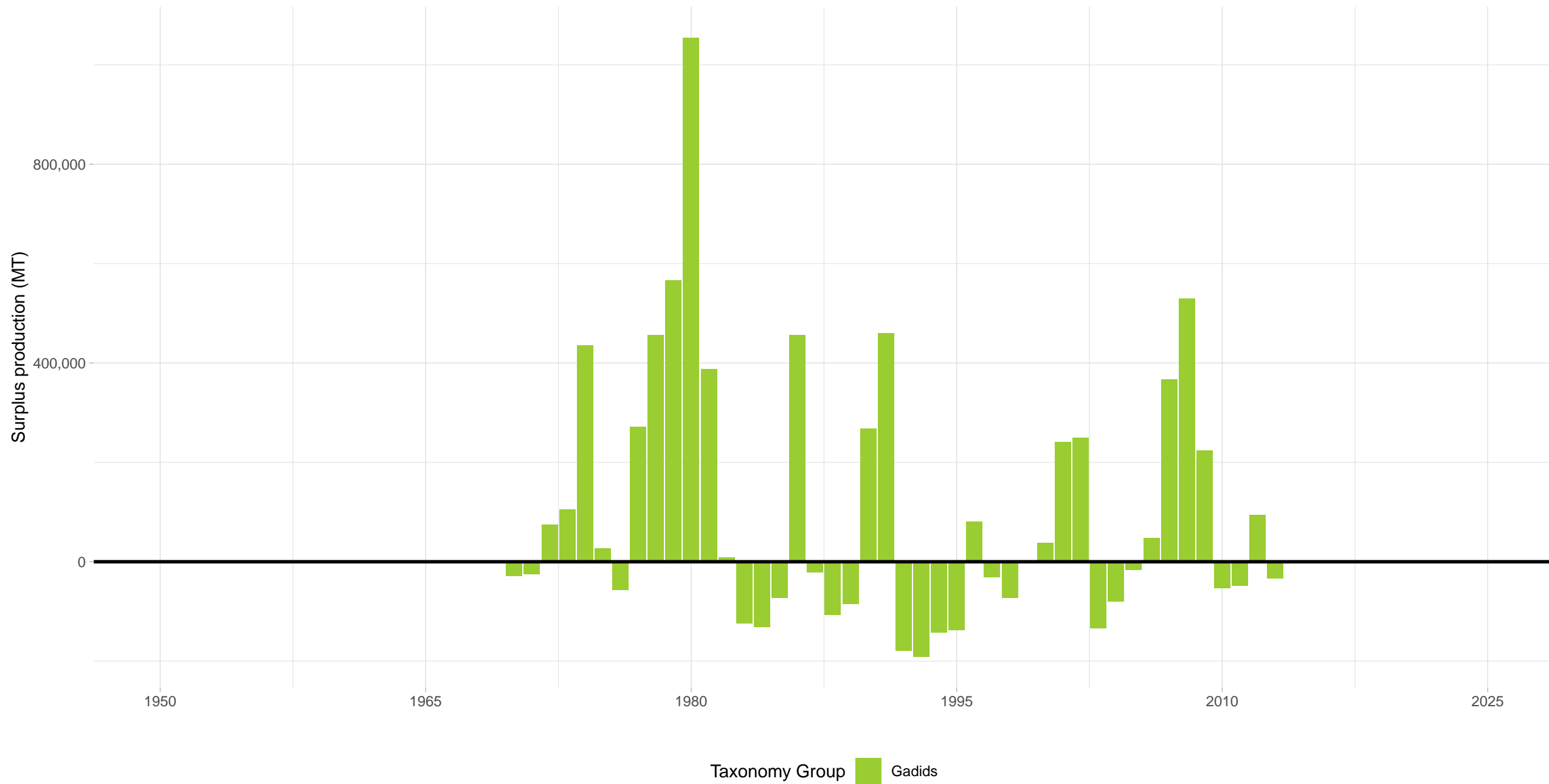


Pacific cod Bering Sea – US Alaska Region  
Stock represents 7% of average absolute surplus production

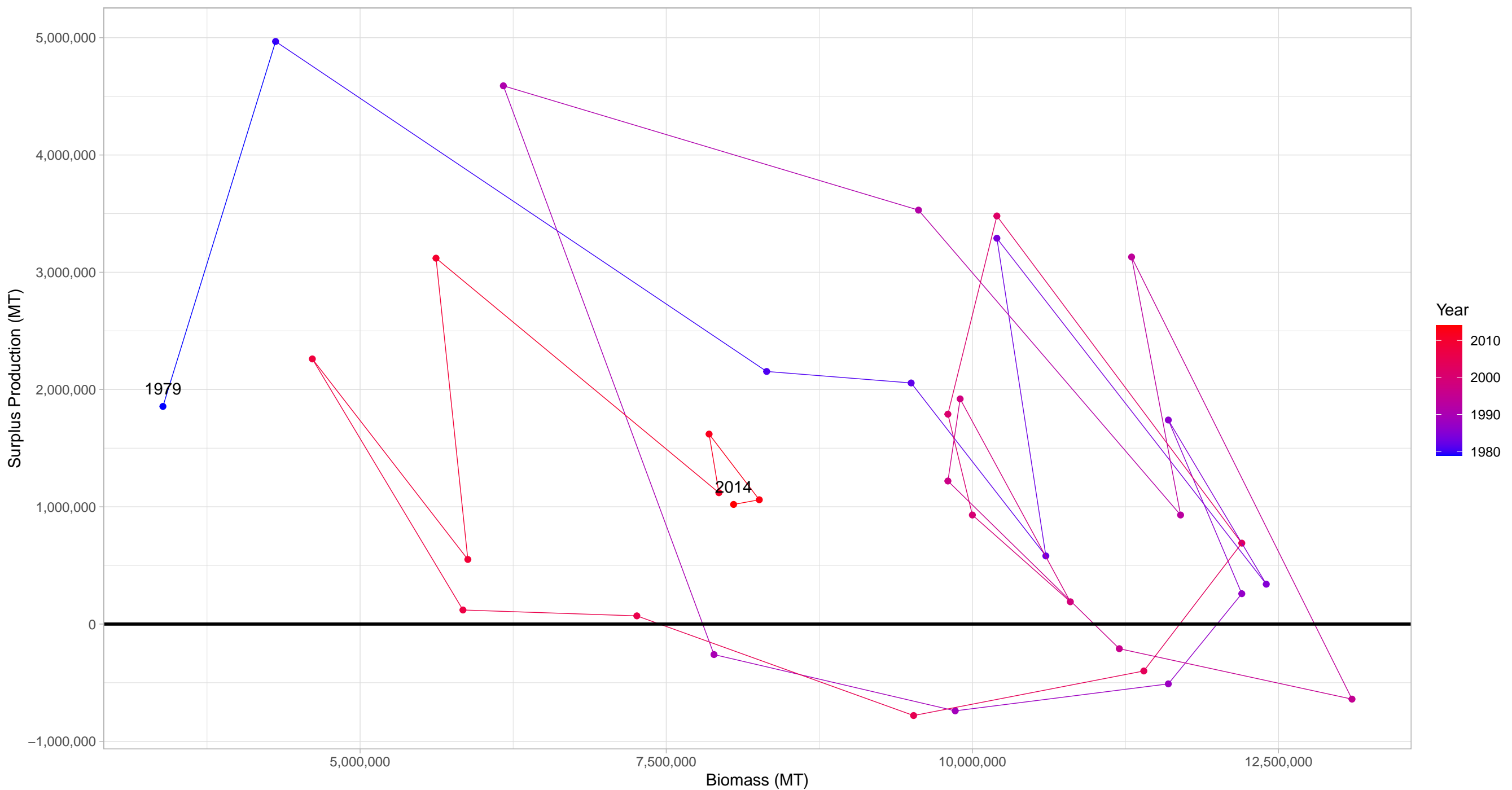


# Walleye pollock Gulf of Alaska – US Alaska Region

Stock represents 7% of average absolute surplus production

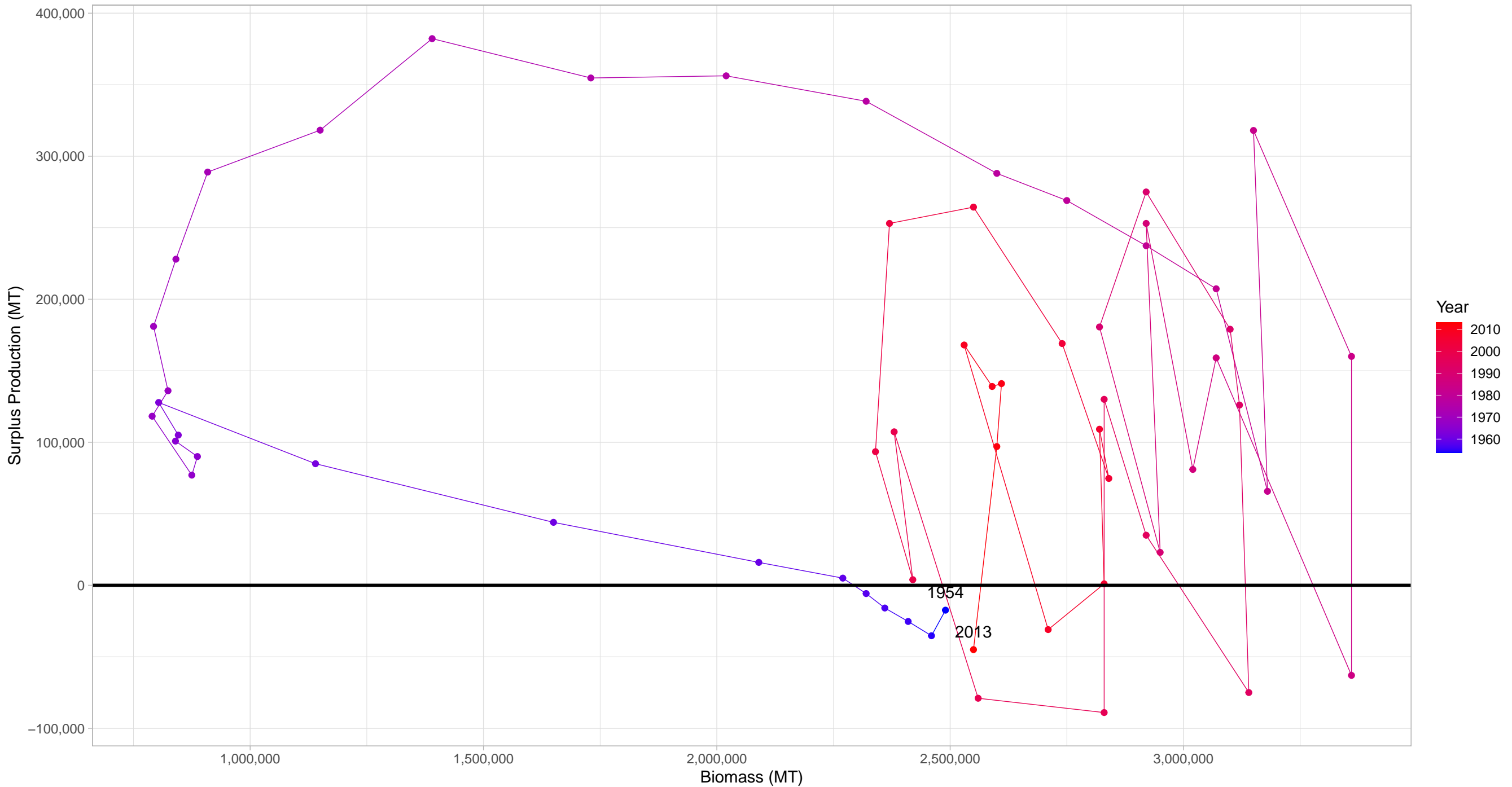


# Walleye pollock Eastern Bering Sea in US Alaska Region

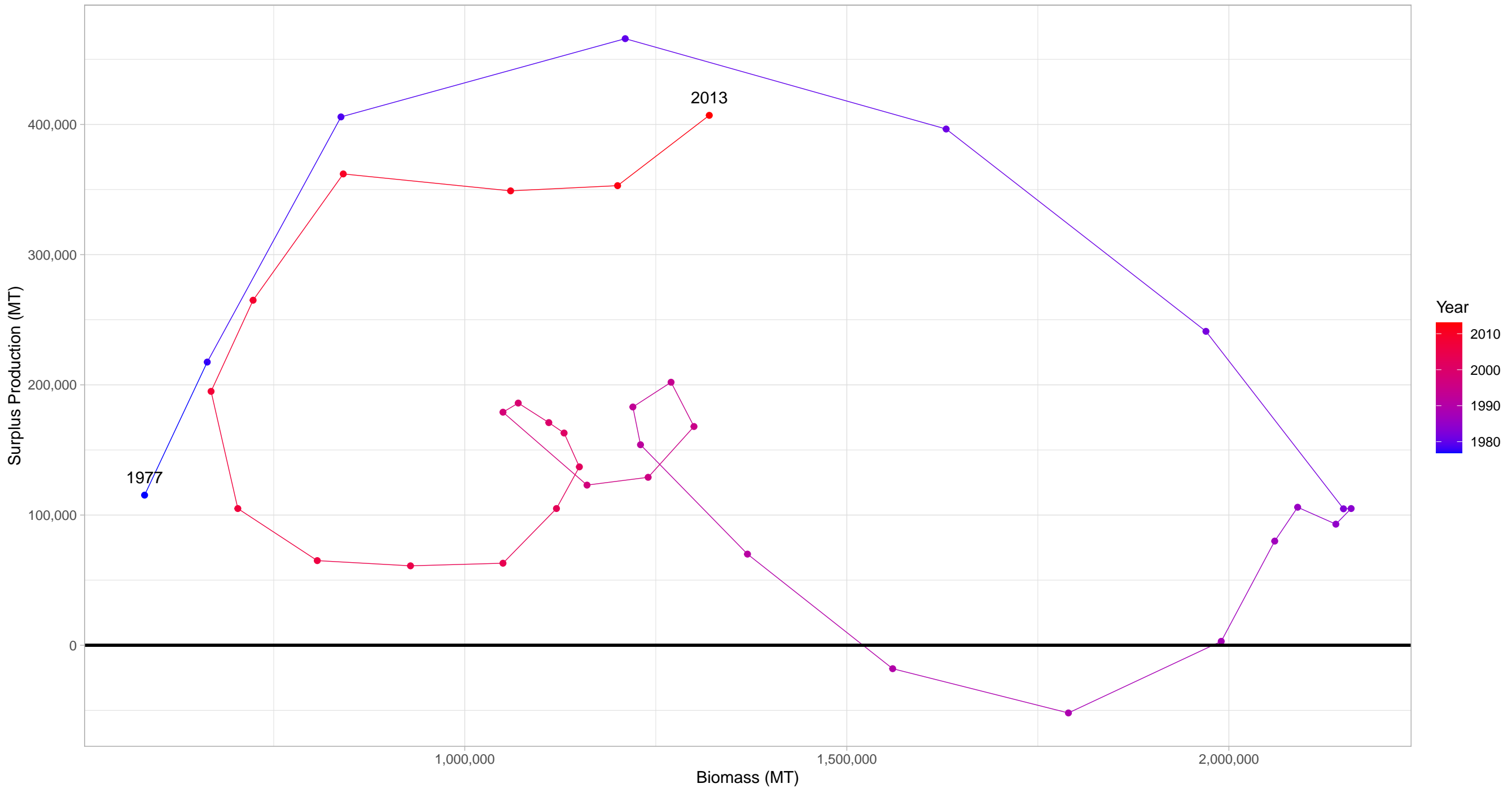




# Yellowfin sole Bering Sea and Aleutian Islands in US Alaska Region



# Pacific cod Bering Sea in US Alaska Region



First and last years with recorded surplus production are labeled

# Walleye pollock Gulf of Alaska in US Alaska Region

